

Anti-NR2C2 / TR4 Rabbit Monoclonal Antibody
Catalog # ABO16666**Specification**

Anti-NR2C2 / TR4 Rabbit Monoclonal Antibody - Product Information

Application	WB
Primary Accession	P49116
Host	Rabbit
Isotype	Rabbit IgG
Reactivity	Rat, Human, Mouse
Clonality	Monoclonal
Format	Liquid

Description

Anti-NR2C2 / TR4 Rabbit Monoclonal Antibody . Tested in WB applications. This antibody reacts with Human, Mouse, Rat.

Anti-NR2C2 / TR4 Rabbit Monoclonal Antibody - Additional Information

Gene ID 7182

Other Names

Nuclear receptor subfamily 2 group C member 2, Orphan nuclear receptor TAK1, Orphan nuclear receptor TR4, Testicular receptor 4, NR2C2, TAK1, TR4

Application Details

WB 1:500-1:2000

Contents

Rabbit IgG in phosphate buffered saline, pH 7.4, 150mM NaCl, 0.02% sodium azide and 50% glycerol, 0.4-0.5mg/ml BSA.

Immunogen

A synthesized peptide derived from human NR2C2 / TR4

Purification

Affinity-chromatography

Storage

Store at -20°C for one year. For short term storage and frequent use, store at 4°C for up to one month. Avoid repeated freeze-thaw cycles.

Anti-NR2C2 / TR4 Rabbit Monoclonal Antibody - Protein Information

Name NR2C2

Synonyms TAK1, TR4

Function

Orphan nuclear receptor that can act as a repressor or activator of transcription. An important repressor of nuclear receptor signaling pathways such as retinoic acid receptor, retinoid X, vitamin D3 receptor, thyroid hormone receptor and estrogen receptor pathways. May regulate gene expression during the late phase of spermatogenesis. Together with NR2C1, forms the core of the DRED (direct repeat erythroid-definitive) complex that represses embryonic and fetal globin transcription including that of GATA1. Binds to hormone response elements (HREs) consisting of two 5'-AGGTCA-3' half site direct repeat consensus sequences. Plays a fundamental role in early embryonic development and embryonic stem cells. Required for normal spermatogenesis and cerebellum development. Appears to be important for neurodevelopmentally regulated behavior (By similarity). Activates transcriptional activity of LHCG. Antagonist of PPARA-mediated transactivation.

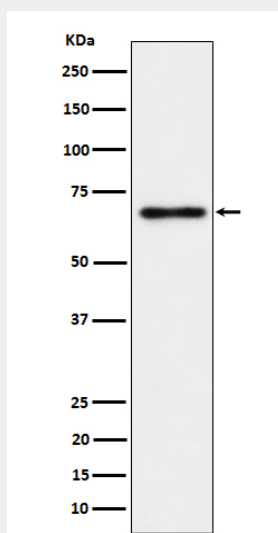
Cellular Location

Nucleus {ECO:0000255|PROSITE-ProRule:PRU00407, ECO:0000269|PubMed:10644740, ECO:0000269|PubMed:15302918}

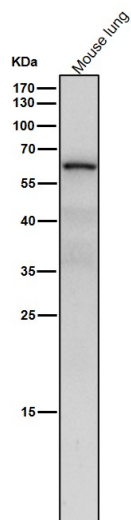
Anti-NR2C2 / TR4 Rabbit Monoclonal Antibody - Protocols

Provided below are standard protocols that you may find useful for product applications.

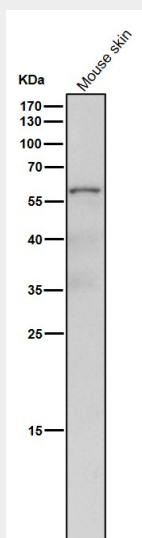
- [Western Blot](#)
- [Blocking Peptides](#)
- [Dot Blot](#)
- [Immunohistochemistry](#)
- [Immunofluorescence](#)
- [Immunoprecipitation](#)
- [Flow Cytometry](#)
- [Cell Culture](#)

Anti-NR2C2 / TR4 Rabbit Monoclonal Antibody - Images

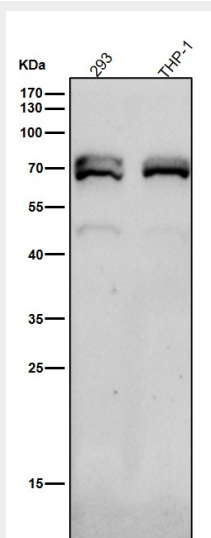
Western blot analysis of NR2C2/TR4 expression in PC-3 cell lysate.



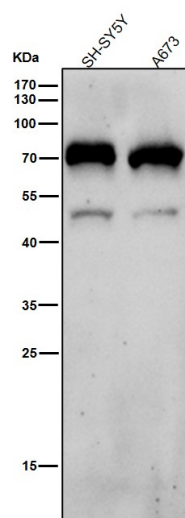
All lanes use the Antibody at 1:4K dilution for 1 hour at room temperature.



All lanes use the Antibody at 1:4K dilution for 1 hour at room temperature.



All lanes use the Antibody at 1:4K dilution for 1 hour at room temperature.



All lanes use the Antibody at 1:4K dilution for 1 hour at room temperature.